



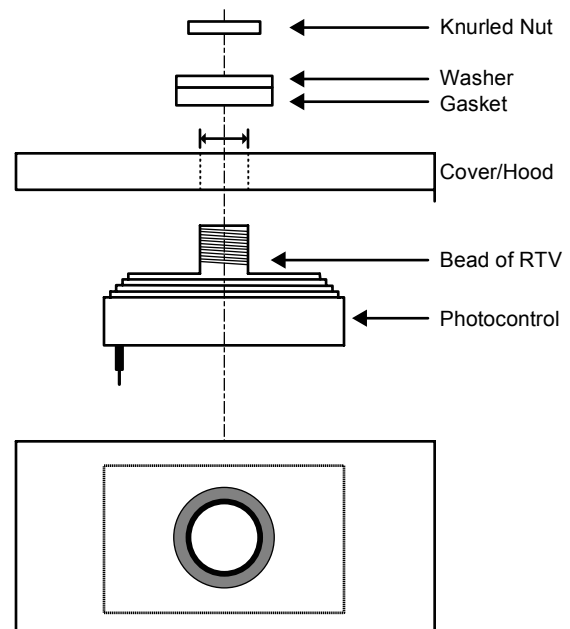
## HLPC

### Photocell Kit Installation Instructions for Field-Installed Class 1, Div 2

1. Drill 13/16" Diameter hole if not provided in cover.
2. Affix the Gasket to the Washer and then install the Photocontrol in the Hole from the inside of the Cover
3. Secure in place with the Knurled Nut on the outside, making sure to compress the Gasket and providing a Weatherproof seal.

**NOTE:** Use a small bead of GE RTV-108 or RTV-122 silicone around the bottom of the Photocell shaft to maintain type 3R and NEMA 4X ratings.

4. Complete the wire connections as indicated on the Photocell Wiring Diagram Label



#### NOTES:

1. THIS EQUIPMENT IS SUITABLE FOR USE IN CLASS I, DIVISION 2 AND ZONE 2, GROUPS A, B, C AND D OR NON-HAZARDOUS LOCATIONS ONLY
2. **WARNING** - EXPLOSION HAZARD - Substitution of components may impair suitability for Class I, Division 2 and Zone 2
3. **WARNING** - EXPLOSION HAZARD - Do not disconnect equipment unless power has been switched off or the area is known to be non-hazardous
4. **WARNING** - EXPLOSION HAZARD - Do not connect or disconnect terminal wiring or fuse knife switches unless power has been switched off or the area is known to be non-hazardous
5. **WARNING:** EXPOSURE TO SOME CHEMICALS MAY DEGRADE THE SEALING PROPERTIES OF MATERIALS USED IN THE FOLLOWING DEVICES: (Identification of devices) or equivalent statement
  - NAME OF SEALED DEVICE – Generic name of material and the supplier's name and type designation
  - A RECOMMENDATION FOR THE USER TO PERIODICALLY INSPECT THE DEVICES NAMED ABOVE for any degradations of properties and replace if degradation found
  - **WARNING:** SUBSTITUTION OF THE FOLLOWING COMPONENTS MAY IMPAIR SUITABILITY FOR DIVISION 2: (List of components that this statement apply to)