

The software can be downloaded from a link sent to you by Thomas Research Products/Hubbell Components and set-up immediately on a PC. The software can also be made available for installation via removable USB key drive. **Please remember that user administration rights are required in order to execute the installation on a PC.**

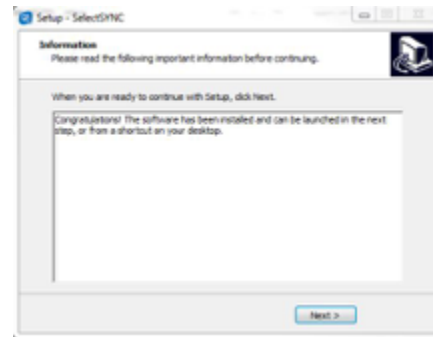
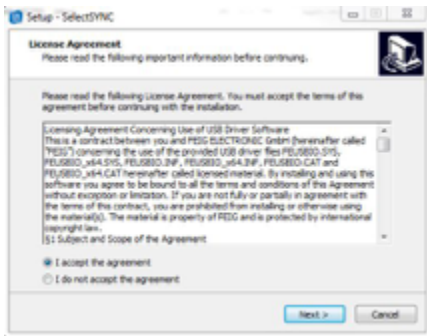
Download and install the software:

A) If connected to the internet, **click on the link** that was emailed to you; or run the SelectSYNC™ application from your key drive.

6) The next window displays the installation progress. When complete, an information window will appear. Click the “Next” button to proceed.

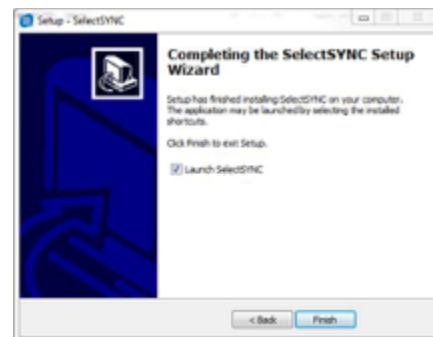
1) An Administrator window will appear to ask for permission to run. Click the “Yes” button.

2) The License agreement window will appear. You must accept the agreement to proceed and select “Next.”

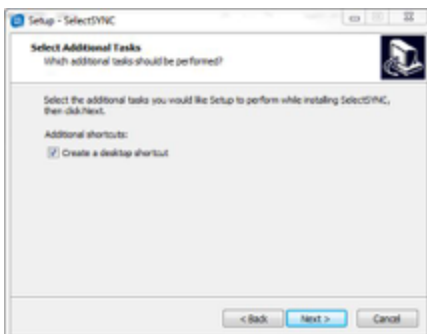


B) An acknowledgement message will appear when the program installs successfully. Click the “Finish” button to complete installation. Click the checkbox if you want to launch the *SelectSYNC* software as soon as the installation is finished.

3) An information window acknowledges you are ready to install the *SelectSYNC* software. Click the “Next” button to proceed.



4) An Additional Task request offers you a checkbox to create a *SelectSYNC* icon on your PC desktop. Click the “Next” button to proceed.



C) The installation wizard creates access to run *SelectSYNC* software in the “All Programs” selection under Windows “Start” Icon. If you chose to add an icon to your PC desktop, you will see it now. It appears as below.



5) A “Ready to Install” window will appear next. Click the “Install” button.

The software is now ready to run.